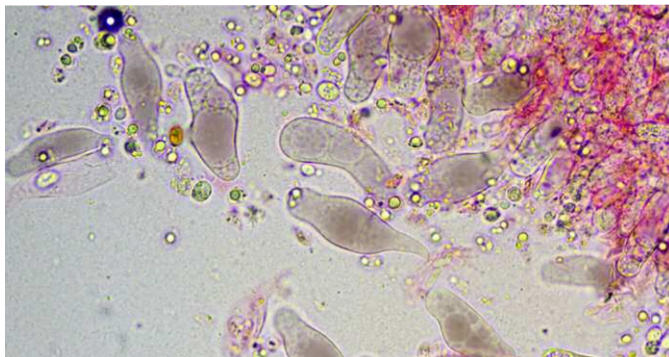


Readers' Finds



Mycena purpureofusca

Epping Forest in Essex is predominantly a deciduous woodland but in the portion called The Warren, in the far northwest corner, is a fairly extensive plantation of conifers. Many of these trees have been cut and stacked in very large piles and on one of these stacks this very distinctive conifer specialist was found.

Its pale gills are edged with dark purplish brown and when placed under a microscope it is easy to see the cause: numerous utriform cystidia with dark contents. The species is considered as rare in Britain outside of the Scottish Highlands and this was a first record for the forest and for Essex.

Other similar species such as *M. rubromarginata* and *M. olivaceo-marginata* have very different cheilocystidia and/or a different habitat. Photos © Mario Tortelli.



Antrodia serialis

On the cut end of one of the logs in the same pile as the species above was seen this beautiful polypore, which is also a conifer specialist. It had started its growth as a resupinate then formed numerous small brackets. Other, younger collections were found almost entirely resupinate.

Its pores are rather long and irregular in shape, often with somewhat dentate margins. Like many species in the genus it has rather elongate, fusoid spores about 4–7 μm in length. It particularly favours the cut surfaces of logs and is occasional in Britain. This was a new record for Epping Forest.

Photograph © Claudi Soler.